

Klemmhalter, Innenbearbeitung, Rundschaft

Rundschaft mit innerer Kühlmittelzufuhr für die Größe A04.

Toolholder, Internal Applications, Round Shank

Round shank with through coolant for size A04.

Anzugsmoment (Schraube) // Tightening torque (screw)

7,0 Nm

Bitte Hinweise im Anhang beachten // Please read add. notes

MASTER (Seite/Page 137)



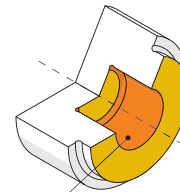
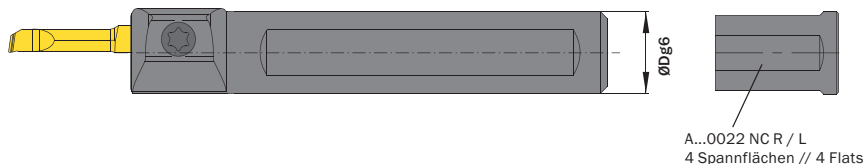
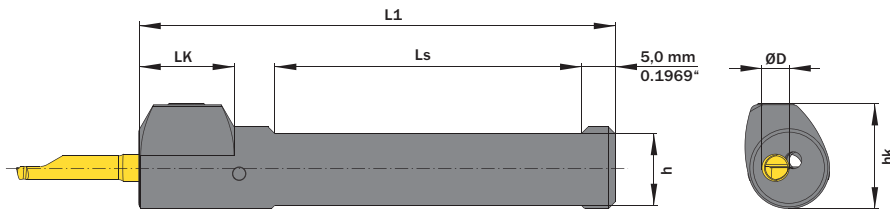
Legende
Legend

139



Scan
QR-Code

Oder besuchen Sie // Or Visit
www.simtek.info/cp/1004



- **Hauptsächlich geeignet für diese Flächen**
Mainly designed for these surfaces
- **Je nach Schneidplatte ebenfalls möglich**
Also possible depending on insert type

Abbildung zeigt / Drawing shows: A04.0012.NC R

| ØD | ØDg6 | Artikelnummer Part number | Webcode www.simtek.com/webcode | | h | hk | L1 | LK | Ls | Anzahl Spannflächen Number of flats | Schraube Screw | Schraubenschlüssel Screw driver | Connectcode www.simtek.com/code | | | | | |
|-----|--------|------------------------------|-----------------------------------|------|---|------|-------|-------|-------|--|-------------------|------------------------------------|------------------------------------|------|---|--------|---|--------|
| | | | | | | | | | | | | | R | L | | | | |
| 4,0 | 10,0 | A04.0010.NC R/L | R | AWBQ | L | AWBP | 8,5 | 13,75 | 65,0 | 14,0 | 40,0 | 2 | AM6x7,5 T15F | T15F | R | A04C.R | L | A04C.L |
| 4,0 | 12,0 | A04.0012.NC R/L | R | AWBT | L | AWBS | 10,5 | 15,25 | 70,0 | 14,0 | 45,0 | 2 | AM6x7,5 T15F | T15F | R | A04C.R | L | A04C.L |
| 4,0 | 12,7 | A04.0.500.NC R/L | R | AWB3 | L | AWB2 | 11,2 | 15,6 | 70,0 | 14,0 | 45,0 | 2 | AM6x7,5 T15F | T15F | R | A04C.R | L | A04C.L |
| 4,0 | 15,875 | A04.0.625.NC R/L | R | AWB5 | L | AWB4 | 14,38 | 17,14 | 75,0 | 14,0 | 55,0 | 2 | AM6x7,5 T15F | T15F | R | A04C.R | L | A04C.L |
| 4,0 | 16,0 | A04.0016.NC R/L | R | AWBV | L | AWBU | 14,5 | 17,2 | 75,0 | 14,0 | 55,0 | 2 | AM6x7,5 T15F | T15F | R | A04C.R | L | A04C.L |
| 4,0 | 19,05 | A04.0.750.NC R/L | R | AWB1 | L | AWB0 | 17,05 | 21,0 | 110,0 | 14,0 | 90,0 | 2 | AM6x7,5 T15F | T15F | R | A04C.R | L | A04C.L |
| 4,0 | 20,0 | A04.0020.NC R/L | R | AWBX | L | AWBW | 18,0 | 22,0 | 90,0 | 14,0 | 70,0 | 2 | AM6x7,5 T15F | T15F | R | A04C.R | L | A04C.L |
| 4,0 | 22,0 | A04.0022.NC R/L | R | AWBZ | L | AWBY | 20,0 | 22,0 | 110,0 | - | 90,0 | 4 | AM6x7,5 T15F | T15F | R | A04C.R | L | A04C.L |

Verwandte Werkzeuge finden Sie auch auf der folgenden Seite!
 Related Items can be found on the following page as well!

Fortgesetzte Tabelle
 Continued Table ▶

Bestellbeispiel // Order example: **A04.0016.NC R** (R = Rechte Ausführung // Right hand version)