

# Klemmhalter, Innenbearbeitung, Rundschaft

Rundschaft mit innerer Kühlmittelzufuhr für die Größe A04.

## Toolholder, Internal Applications, Round Shank

Round shank with through coolant for size A04.

Anzugsmoment (Schraube) // Tightening torque (screw)

**7,0 Nm**

Bitte Hinweise im Anhang beachten // Please read add. notes

**MASTER (Seite/Page 137)**



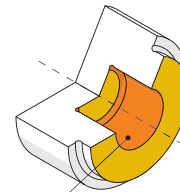
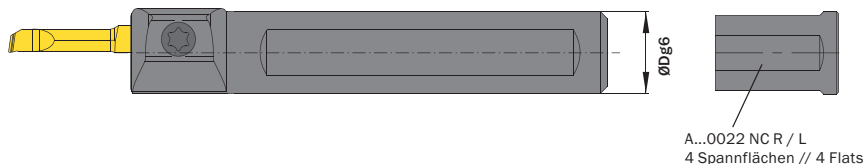
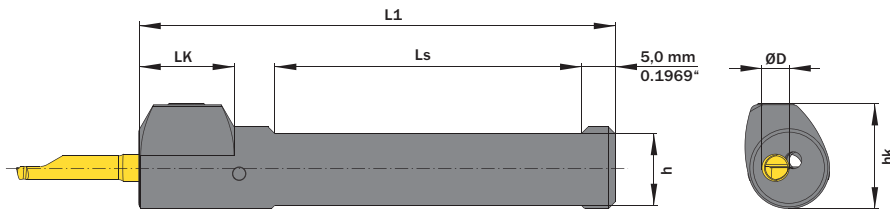
Legende  
Legend

**139**



Scan  
QR-Code

Oder besuchen Sie // Or Visit  
[www.simtek.info/cp/1004](http://www.simtek.info/cp/1004)



- **Hauptsächlich geeignet für diese Flächen**  
Mainly designed for these surfaces
- **Je nach Schneidplatte ebenfalls möglich**  
Also possible depending on insert type

Abbildung zeigt / Drawing shows: A04.0012.NC R

ØD	ØDg6	Artikelnummer Part number	Webcode <a href="http://www.simtek.com/webcode">www.simtek.com/webcode</a>		h	hk	L1	LK	Ls	Anzahl Spannflächen Number of flats	Schraube Screw	Schraubenschlüssel Screw driver	Connectcode <a href="http://www.simtek.com/code">www.simtek.com/code</a>					
													R	L				
4,0	10,0	<b>A04.0010.NC R/L</b>	R	AWBQ	L	AWBP	8,5	13,75	65,0	14,0	40,0	2	A M6x7,5 T15F	T15F	R	A04C.R	L	A04C.L
4,0	12,0	<b>A04.0012.NC R/L</b>	R	AWBT	L	AWBS	10,5	15,25	70,0	14,0	45,0	2	A M6x7,5 T15F	T15F	R	A04C.R	L	A04C.L
4,0	12,7	<b>A04.0.500.NC R/L</b>	R	AWB3	L	AWB2	11,2	15,6	70,0	14,0	45,0	2	A M6x7,5 T15F	T15F	R	A04C.R	L	A04C.L
4,0	15,875	<b>A04.0.625.NC R/L</b>	R	AWB5	L	AWB4	14,38	17,14	75,0	14,0	55,0	2	A M6x7,5 T15F	T15F	R	A04C.R	L	A04C.L
4,0	16,0	<b>A04.0016.NC R/L</b>	R	AWBV	L	AWBU	14,5	17,2	75,0	14,0	55,0	2	A M6x7,5 T15F	T15F	R	A04C.R	L	A04C.L
4,0	19,05	<b>A04.0.750.NC R/L</b>	R	AWB1	L	AWB0	17,05	21,0	110,0	14,0	90,0	2	A M6x7,5 T15F	T15F	R	A04C.R	L	A04C.L
4,0	20,0	<b>A04.0020.NC R/L</b>	R	AWBX	L	AWBW	18,0	22,0	90,0	14,0	70,0	2	A M6x7,5 T15F	T15F	R	A04C.R	L	A04C.L
4,0	22,0	<b>A04.0022.NC R/L</b>	R	AWBZ	L	AWBY	20,0	22,0	110,0	-	90,0	4	A M6x7,5 T15F	T15F	R	A04C.R	L	A04C.L

Verwandte Werkzeuge finden Sie auch auf der folgenden Seite!  
Related Items can be found on the following page as well!

Fortgesetzte Tabelle  
Continued Table

Bestellbeispiel // Order example: **A04.0016.NC R** (R = Rechte Ausführung // Right hand version)