

# Klemmhalter, Innenbearbeitung

Stahl-Rundschaft mit innerer Kühlmittelzufuhr.

## Toolholder, For Internal Applications

Steel round shank toolholder with through coolant.

Anzugsmoment (Schraube) // Tightening torque (screw)

- "D M2,6x8 T8F": 1,5 Nm
- "D M2x7,5 T7F": 0,8 Nm
- "D M3x9 T9F": 2,1 Nm
- "D M4x12 T15F": 4,5 Nm
- "D M5x12 T20T": 7,0 Nm

Bitte Hinweise im Anhang beachten // Please read add. notes

**MASTER (Seite/Page 212)**

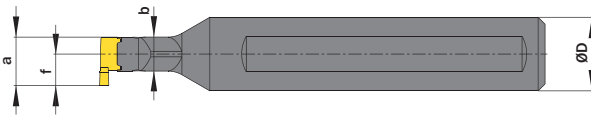
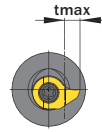
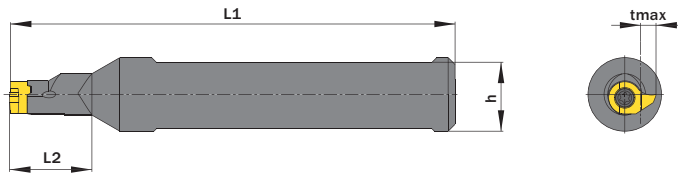


Legende  
Legend **213**

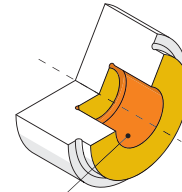


Scan  
QR-Code

Oder besuchen Sie // Or Visit  
[www.simtek.info/cp/812](http://www.simtek.info/cp/812)



Maße „a“, „f“ and „tmax“ sind abhängig vom verwendeten Schneideinsatz.  
Dimensions „a“, „f“ and „tmax“ depend on used carbide inserts.



- Hauptsächlich geeignet für diese Flächen  
Mainly designed for these surfaces
- Je nach Schneidplatte ebenfalls möglich  
Also possible depending on insert type

Abbildung zeigt / Drawing shows: D10.0016.16 ST

| ØD <sup>g6</sup><br>mm     | L2<br>mm | Artikelnummer<br>Part number | Webcode<br><a href="http://www.simtek.com/webcode">www.simtek.com/webcode</a> | b<br>mm | h<br>mm | L1<br>mm | Schraube<br>Screw | Schraubenschlüssel<br>Screw driver | Connectcode<br><a href="http://www.simtek.com/code">www.simtek.com/code</a> |
|----------------------------|----------|------------------------------|---|---------|---------|----------|-------------------|------------------------------------|---|
| <b>▼ Connectcode = D07</b> |          |                              |   |         |         |          |                   |                                    |   |
| 12,0                       | 21,0     | <b>D07.0012.21 ST</b>        | AU5Z  | 4,8     | 11,0    | 80,0     | D M2x7,5 T7F      | T7F                                | D07   |
| 16,0                       | 12,0     | <b>D07.0016.12 ST</b>        | AU6A  | 4,8     | 15,0    | 80,0     | D M2x7,5 T7F      | T7F                                | D07   |
| 12,7                       | 21,0     | <b>D07.0.500.21 ST</b>       | A5T9  | 4,8     | 11,7    | 80,0     | D M2x7,5 T7F      | T7F                                | D07 <small>new inch</small>   |
| 15,875                     | 12,0     | <b>D07.0.625.12 ST</b>       | A5UB  | 4,8     | 14,88   | 80,0     | D M2x7,5 T7F      | T7F                                | D07 <small>new inch</small>   |
| <b>▼ Connectcode = D09</b> |          |                              |   |         |         |          |                   |                                    |   |
| 16,0                       | 14,0     | <b>D09.0016.14 ST</b>        | AWFE  | 6,6     | 15,0    | 95,0     | D M2,6x8 T8F      | T8F                                | D09   |
| 15,875                     | 14,0     | <b>D09.0.625.14 ST</b>       | A3UH  | 6,6     | 14,88   | 95,0     | D M2,6x8 T8F      | T8F                                | D09 <small>new inch</small>   |
| <b>▼ Connectcode = D10</b> |          |                              |   |         |         |          |                   |                                    |   |
| 16,0                       | 16,0     | <b>D10.0016.16 ST</b>        | ACCJ  | 7,4     | 15,0    | 97,0     | D M3x9 T9F        | T9F                                | D10   |
| 16,0                       | 24,0     | <b>D10.0016.24 ST</b>        | A016  | 7,4     | 15,0    | 97,0     | D M3x9 T9F        | T9F                                | D10   |
| 15,875                     | 16,0     | <b>D10.0.625.16 ST</b>       | ABKU  | 7,4     | 14,88   | 97,0     | D M3x9 T9F        | T9F                                | D10 <small>inch</small>   |
| 15,875                     | 24,0     | <b>D10.0.625.24 ST</b>       | A017  | 7,4     | 14,88   | 105,0    | D M3x9 T9F        | T9F                                | D10 <small>inch</small>   |
| <b>▼ Connectcode = D14</b> |          |                              |   |         |         |          |                   |                                    |   |
| 16,0                       | 20,0     | <b>D14.0016.20 ST</b>        | ANP6  | 9,5     | 15,0    | 100,0    | D M4x12 T15F      | T15F                               | D14   |
| 16,0                       | 30,0     | <b>D14.0016.30 ST</b>        | A005  | 9,5     | 15,0    | 100,0    | D M4x12 T15F      | T15F                               | D14   |
| 15,875                     | 20,0     | <b>D14.0.625.20 ST</b>       | ADZ8  | 9,5     | 14,88   | 100,0    | D M4x12 T15F      | T15F                               | D14 <small>inch</small>   |
| 15,875                     | 30,0     | <b>D14.0.625.30 ST</b>       | A5UD  | 9,5     | 14,88   | 100,0    | D M4x12 T15F      | T15F                               | D14 <small>new inch</small>   |
| <b>▼ Connectcode = D18</b> |          |                              |   |         |         |          |                   |                                    |   |
| 20,0                       | 25,0     | <b>D18.0020.25 ST</b>        | AAWH  | 11,5    | 19,0    | 95,0     | D M5x12 T20T      | T20T                               | D18   |
| 20,0                       | 40,0     | <b>D18.0020.40 ST</b>        | APH3  | 11,5    | 19,0    | 105,0    | D M5x12 T20T      | T20T                               | D18   |
| 19,05                      | 25,0     | <b>D18.0.750.25 ST</b>       | AVW1  | 11,48   | 18,05   | 95,0     | D M5x12 T20T      | T20T                               | D18 <small>inch</small>   |
| 19,05                      | 40,0     | <b>D18.0.750.40 ST</b>       | AVW2  | 11,48   | 18,05   | 105,0    | D M5x12 T20T      | T20T                               | D18 <small>inch</small>   |

Bestellbeispiel // Order example: **D14.0016.20 ST**