

# Doppelklemmhalter, Innenbearbeitung

Doppelklemmhalter für passende Langdrehautomaten.

## Toolholder, Internal Applications

Double toolholder for swiss type machines.

Anzugsmoment (Schraube) // Tightening torque (screw)

**7,0 Nm**

Bitte Hinweise im Anhang beachten // Please read add. notes

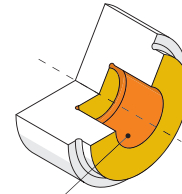
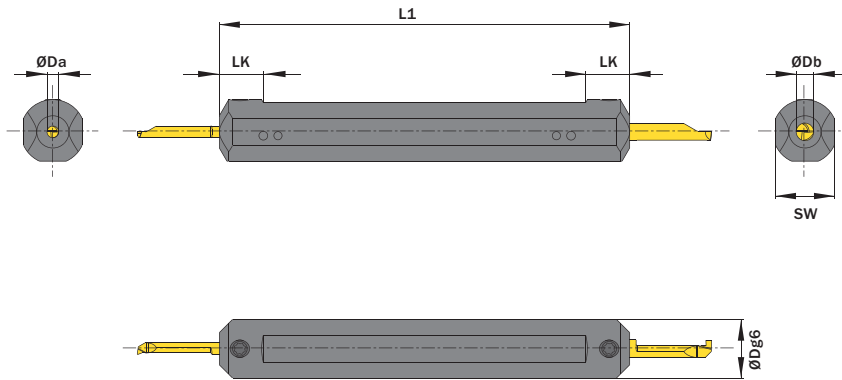
**MASTER (Seite/Page 137)**



**TW** Legende  
**ST** Legend **139**

Scan QR-Code

Oder besuchen Sie // Or Visit [www.simtek.info/cp/742](http://www.simtek.info/cp/742)



- Hauptsächlich geeignet für diese Flächen  
Mainly designed for these surfaces
- Je nach Schneidplatte ebenfalls möglich  
Also possible depending on insert type

Abbildung zeigt / Drawing shows: A04.0.750.0140.A06

ØDa	ØDg6	L1	ØDb	Artikelnummer Part number	Webcode www.simtek.com/webcode	LK	SW	Schraube Screw	Schraubenschlüssel Screw driver	Connectcode www.simtek.com/code
mm	mm	mm	mm			mm	mm			
<b>▼ ØDa = 4,0 mm</b>										
4,0	19,05	140,0	6,0	<b>A04.0.750.0140.A06</b>	AHWS	15,0	17,0	A M6x7,5 T15F	T15F	A04.L A04.R A04CL A04.C.R A06.L A06.R
4,0	20,0	140,0	4,0	<b>A04.0020.0140.A04</b>	APJQ	15,0	17,0	A M6x7,5 T15F	T15F	A04.L A04.R A04CL A04C.R
4,0	20,0	140,0	5,0	<b>A04.0020.0140.A05</b>	AMF0	15,0	17,0	A M6x7,5 T15F	T15F	A04.L A04.R A04CL A04.C.R A05.L A05.R
4,0	20,0	140,0	6,0	<b>A04.0020.0140.A06</b>	AAWT	15,0	18,0	A M6x7,5 T15F	T15F	A04.L A04.R A04CL A04.C.R A06.L A06.R
4,0	22,0	140,0	4,0	<b>A04.0022.0140.A04</b>	AGV1	15,0	20,0	A M6x7,5 T15F	T15F	A04.L A04.R A04CL A04C.R
4,0	22,0	140,0	6,0	<b>A04.0022.0140.A06</b>	AA6P	15,0	20,0	A M6x7,5 T15F	T15F	A04.L A04.R A04CL A04.C.R A06.L A06.R
4,0	25,0	140,0	6,0	<b>A04.0025.0140.A06</b>	AEZP	15,0	23,0	A M6x7,5 T15F	T15F	A04.L A04.R A04CL A04.C.R A06.L A06.R
4,0	28,0	140,0	6,0	<b>A04.0028.0140.A06</b>	AB7A	15,0	26,0	A M6x7,5 T15F	T15F	A04.L A04.R A04CL A04.C.R A06.L A06.R
<b>▼ ØDa = 5,0 mm</b>										
5,0	20,0	140,0	5,0	<b>A05.0020.0140.A05</b>	AK9Y	15,0	17,0	A M6x7,5 T15F	T15F	A05.L A05.R
5,0	20,0	140,0	6,0	<b>A05.0020.0140.A06</b>	APND	15,0	17,0	A M6x7,5 T15F	T15F	A05.L A05.R A06.L A06.R
<b>▼ ØDa = 6,0 mm</b>										
6,0	20,0	140,0	6,0	<b>A06.0020.0140.A06</b>	AGXT	15,0	17,0	A M6x7,5 T15F	T15F	A06.L A06.R
6,0	22,0	140,0	6,0	<b>A06.0022.0140.A06</b>	AJC6	15,0	19,0	A M6x7,5 T15F	T15F	A06.L A06.R

Bestellbeispiel // Order example: **A04.0022.0140.A06**