

## Klemmhalter / Adapter, Innenbearbeitung

Adapter für D07-Schneidplatten auf A06-Klemmhalter.  
Schwingungsgedämpfter Hartmetall-Rundschaft  
mit innerer Kühlmittelzufuhr.

## Toolholder / Adapter, For Internal Applications

Adapter for D07 inserts on A06 toolholder.  
Anti-vibration solid carbide round shank toolholder  
with through coolant.

Anzugsmoment (Schraube) // Tightening torque (screw)

**0,8 Nm**

Bitte Hinweise im Anhang beachten // Please read add. notes

**MASTER (Seite/Page 212)**

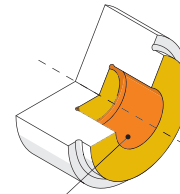
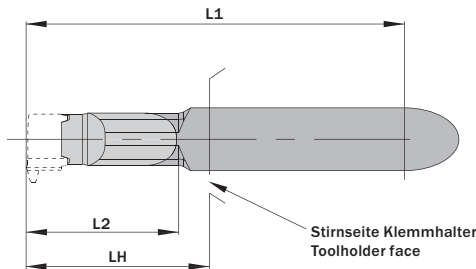
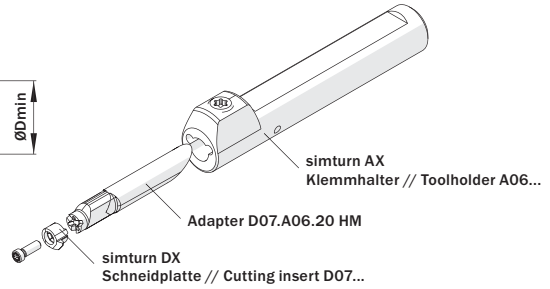
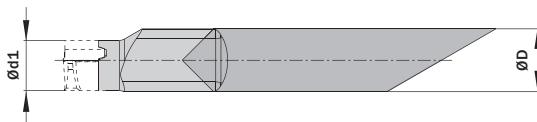


Legende  
Legend **213**



Scan  
QR-Code

Oder besuchen Sie // Or Visit  
[www.simtek.info/cp/809](http://www.simtek.info/cp/809)



- Hauptsächlich geeignet für diese Flächen  
Mainly designed for these surfaces
- Je nach Schneidplatte ebenfalls möglich  
Also possible depending on insert type

Abbildung zeigt / Drawing shows: D07.A06.20 HM

ØD <sup>h6</sup>	L2	Artikelnummer Part number	Webcode <a href="http://www.simtek.com/webcode">www.simtek.com/webcode</a>	Ød1	ØDmin (Min. Bohrung) ØDmin (min. bore)	L1	LH	Schraube Screw	Schraubenschlüssel Screw driver	Connectcode <a href="http://www.simtek.com/code">www.simtek.com/code</a>
mm	mm			mm	mm	mm	mm			
▼ L2 = 20,0 mm										
6,0	20,0	<b>D07.A06.20 HM</b>	AHSC	4,8	7,0	42,25	23,0	DM2x7,5T7F	T7F	D07
▼ L2 = 30,0 mm										
6,0	30,0	<b>D07.A06.30 HM</b>	AJ5U	4,8	7,0	52,25	33,0	DM2x7,5T7F	T7F	D07
▼ L2 = 40,0 mm										
6,0	40,0	<b>D07.A06.40 HM</b>	AAVG	4,8	7,0	62,25	43,0	DM2x7,5T7F	T7F	D07
▼ L2 = 50,0 mm										
6,0	50,0	<b>D07.A06.50 HM</b>	ACBT	4,8	7,0	72,25	53,0	DM2x7,5T7F	T7F	D07
▼ L2 = 60,0 mm										
6,0	60,0	<b>D07.A06.60 HM</b>	AKSW	4,8	7,0	82,25	63,0	DM2x7,5T7F	T7F	D07

Bestellbeispiel // Order example: **D07.A06.40 HM**