

# Klemmhalter, Innenbearbeitung, Quadratschaft

Quadratischer Schaft für die Innenbearbeitung.

# Toolholder, Internal Applications, Square Shank

Square shank for internal applications.

Anzugsmoment (Schraube) // Tightening torque (screw)

**7,0 Nm**

Bitte Hinweise im Anhang beachten // Please read add. notes

**MASTER (Seite/Page 137)**

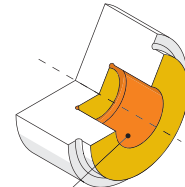
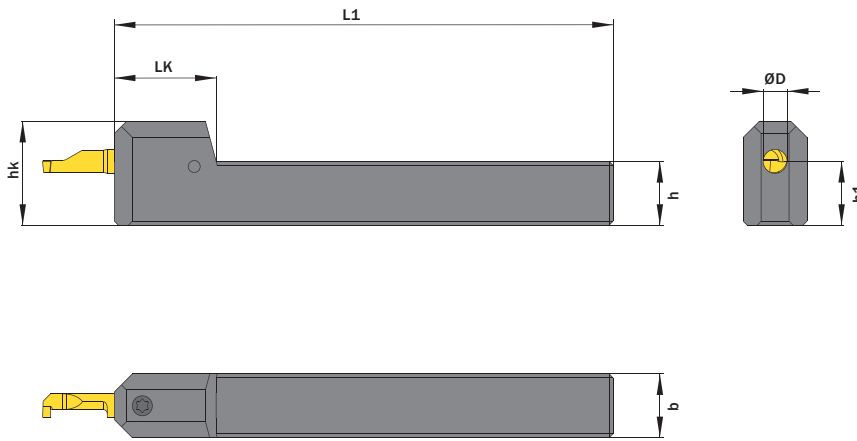


**TW** Legende  
**ST** Legend

**139**

Scan QR-Code

Oder besuchen Sie // Or Visit  
[www.simtek.info/cp/786](http://www.simtek.info/cp/786)



- Hauptsächlich geeignet für diese Flächen  
Mainly designed for these surfaces
- Je nach Schneidplatte ebenfalls möglich  
Also possible depending on insert type

Abbildung zeigt / Drawing shows: A06.1616

ØD	h	b	Artikelnummer Part number	Webcode www.simtek.com/webcode	h1	hk	L1	LK	Schraube Screw	Schraubenschlüssel Screw driver	Connectcode www.simtek.com/code
mm	mm	mm			mm	mm	mm	mm			

Fortgesetzte Tabelle  
Continued Table

Verwandte Werkzeuge finden Sie auch auf der vorhergehenden Seite!  
Related Items can be found on the previous page as well!

▼ ØD = 6,0 mm

6,0	12,7	12,7	<b>A06.0.500.S</b>	AD05	12,7	23,0	100,0	26,0	A M6x7,5 T15F	T15F	A06.L A06.R	Inch
6,0	15,875	15,875	<b>A06.0.625.S</b>	AJQH	15,88	26,0	125,0	25,5	A M6x7,5 T15F	T15F	A06.L A06.R	Inch
6,0	19,05	19,05	<b>A06.0.750.S</b>	AF15	19,05	29,0	125,0	25,5	A M6x7,5 T15F	T15F	A06.L A06.R	Inch
6,0	25,4	25,4	<b>A06.1.000.S</b>	ATZN	25,4	35,0	150,0	25,5	A M6x7,5 T15F	T15F	A06.L A06.R	Inch
6,0	12,0	12,0	<b>A06.1212</b>	AA3P	12,0	22,0	100,0	26,0	A M6x7,5 T15F	T15F	A06.L A06.R	
6,0	16,0	16,0	<b>A06.1616</b>	AKPT	16,0	26,0	125,0	25,5	A M6x7,5 T15F	T15F	A06.L A06.R	
6,0	20,0	20,0	<b>A06.2020</b>	ANFN	20,0	30,0	125,0	25,5	A M6x7,5 T15F	T15F	A06.L A06.R	
6,0	25,0	25,0	<b>A06.2525</b>	ATZJ	25,0	35,0	150,0	25,5	A M6x7,5 T15F	T15F	A06.L A06.R	

▼ ØD = 7,0 mm

7,0	15,875	15,875	<b>A07.0.625.S</b>	AC7G	15,88	26,5	125,0	26,5	A M6x7,5 T15F	T15F	A07.L A07.R	Inch
7,0	19,05	19,05	<b>A07.0.750.S</b>	AKF3	19,05	29,5	125,0	26,5	A M6x7,5 T15F	T15F	A07.L A07.R	Inch
7,0	25,4	25,4	<b>A07.1.000.S</b>	ATZM	25,4	35,5	150,0	26,5	A M6x7,5 T15F	T15F	A07.L A07.R	Inch
7,0	16,0	16,0	<b>A07.1616</b>	AFAZ	16,0	26,5	125,0	26,5	A M6x7,5 T15F	T15F	A07.L A07.R	
7,0	20,0	20,0	<b>A07.2020</b>	AF1G	20,0	30,5	125,0	26,5	A M6x7,5 T15F	T15F	A07.L A07.R	
7,0	25,0	25,0	<b>A07.2525</b>	ATZK	25,0	35,5	150,0	26,5	A M6x7,5 T15F	T15F	A07.L A07.R	

Verwandte Werkzeuge finden Sie auch auf der folgenden Seite!  
Related Items can be found on the following page as well!

Fortgesetzte Tabelle  
Continued Table

Bestellbeispiel // Order example: **A06.2020**