

# Klemmhalter, Innenbearbeitung, für Star-Maschinen

Für die Drehbearbeitung innen.

## Toolholder, Internal Applications, for Star-Machines

For internal turning applications.

Anzugsmoment (Schraube) // Tightening torque (screw)

**7,0 Nm**

Bitte Hinweise im Anhang beachten // Please read add. notes

**MASTER (Seite/Page 137)**



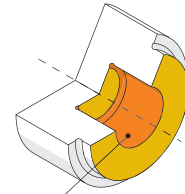
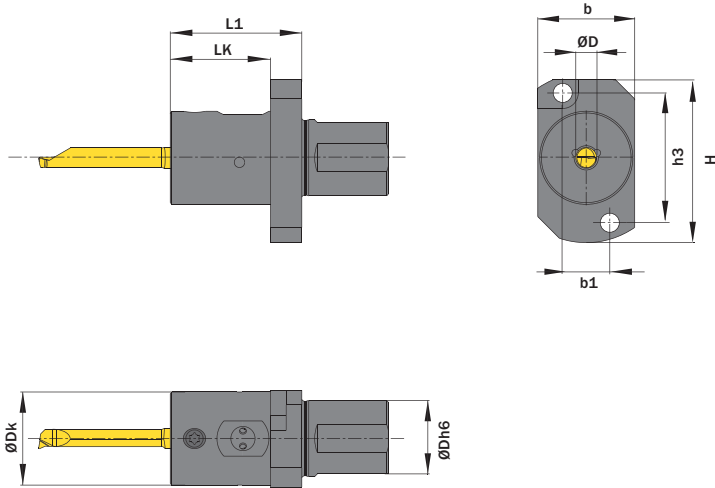
Legende  
Legend

**139**



Scan  
QR-Code

Oder besuchen Sie // Or Visit  
[www.simtek.info/cp/748](http://www.simtek.info/cp/748)



- Hauptsächlich geeignet für diese Flächen  
Mainly designed for these surfaces
- Je nach Schneidplatte ebenfalls möglich  
Also possible depending on insert type

Abbildung zeigt / Drawing shows: A06.ST22

ØD	ØDh6	Artikelnummer Part number	Webcode www.simtek.com/webcode	b	b1	ØDk	H	h3	L1	LK	Schraube Screw	Schraubenschlüssel Screw driver	Connectcode www.simtek.com/code
mm	mm			mm	mm	mm	mm	mm	mm	mm			
▼ ØD = 4,0 mm													
4,0	22,0	<b>A04.ST22</b>	ANWS	28,0	13,6	26,9	47,0	37,5	38,0	29,0	AM6x7,5 T15F	T15F	A04.L A04.R A04C.L A04C.R
▼ ØD = 5,0 mm													
5,0	22,0	<b>A05.ST22</b>	AJQC	28,0	13,6	26,9	47,0	37,5	38,0	29,0	AM6x7,5 T15F	T15F	A05.L A05.R
▼ ØD = 6,0 mm													
6,0	22,0	<b>A06.ST22</b>	AKAU	28,0	13,6	26,9	47,0	37,5	38,0	29,0	AM6x7,5 T15F	T15F	A06.L A06.R
▼ ØD = 7,0 mm													
7,0	22,0	<b>A07.ST22</b>	ACP1	28,0	13,6	26,9	47,0	37,5	38,0	29,0	AM6x7,5 T15F	T15F	A07.L A07.R

Bestellbeispiel // Order example: **A06.ST22**