

# Klemmhalter, Innenbearbeitung

Geeignet zum Fräsen und Ausspindeln.

## Toolholder, Internal Applications

For milling and boring applications.

Anzugsmoment (Schraube) // Tightening torque (screw)  
**7,0 Nm**

Bitte Hinweise im Anhang beachten // Please read add. notes  
**MASTER (Seite/Page 137)**

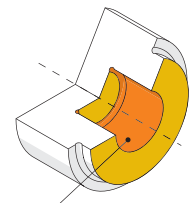
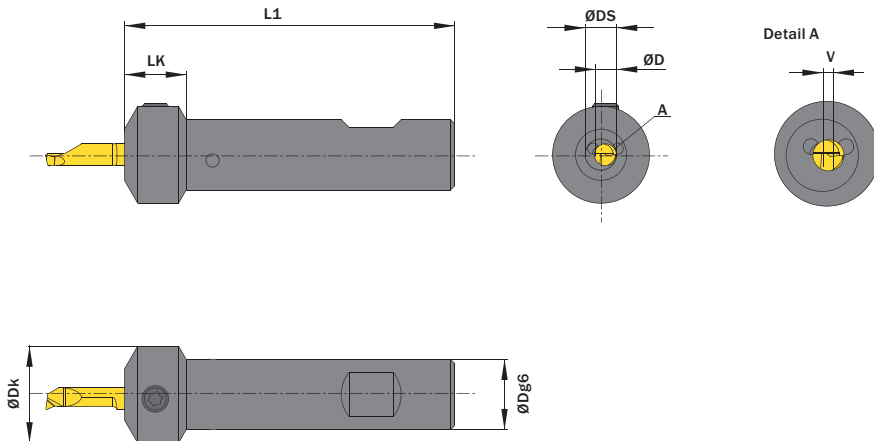
TW

ST

Legende  
Legend

139

Scan QR-Code
 Oder besuchen Sie // Or Visit [www.simtek.info/cp/743](http://www.simtek.info/cp/743)



- Hauptsächlich geeignet für diese Flächen  
Mainly designed for these surfaces
- Je nach Schneidplatte ebenfalls möglich  
Also possible depending on insert type

Abbildung zeigt / Drawing shows: A05.0016.07 B ST

ØD	ØDg6	ØDS	Artikelnummer Part number	Webcode www.simtek.com/webcode	ØDk	L1	LK	V	Schraube Screw	Schraubenschlüssel Screw driver	Connectcode www.simtek.com/code	
mm	mm	mm			mm	mm	mm	mm				
<b>▼ ØD = 4,0 mm</b>												
4,0	15,875	5,9	<b>A04.0.625.05 B ST</b>	A5U7	21,0	75,0	14,0	1,0	A M6x7,5 T15F	T15F	A04.L A04.R	<span style="background-color: #f00; color: white; font-size: 8px;">new inch</span>
4,0	16,0	5,9	<b>A04.0016.05 B ST</b>	APUS	21,0	75,0	14,0	1,0	A M6x7,5 T15F	T15F	A04.L A04.R	
4,0	16,0	6,0	<b>A04.0016.06 B ST</b>	AB4A	21,0	75,0	14,0	1,05	A M6x7,5 T15F	T15F	A04.L A04.R	
<b>▼ ØD = 5,0 mm</b>												
5,0	15,875	6,9	<b>A05.0.625.07 B ST</b>	A5U9	22,0	75,0	14,0	1,0	A M6x7,5 T15F	T15F	A05.L A05.R	<span style="background-color: #f00; color: white; font-size: 8px;">new inch</span>
5,0	16,0	6,9	<b>A05.0016.07 B ST</b>	AMBQ	22,0	75,0	14,0	1,0	A M6x7,5 T15F	T15F	A05.L A05.R	
5,0	16,0	7,5	<b>A05.0016.08 B ST</b>	AE97	22,0	75,0	14,0	1,3	A M6x7,5 T15F	T15F	A05.L A05.R	
<b>▼ ØD = 6,0 mm</b>												
6,0	15,875	9,8	<b>A06.0.625.10 B ST</b>	A5VB	22,0	75,0	14,0	1,95	A M6x7,5 T15F	T15F	A06.L A06.R	<span style="background-color: #f00; color: white; font-size: 8px;">new inch</span>
6,0	16,0	9,8	<b>A06.0016.10 B ST</b>	AC9M	22,0	75,0	14,0	1,95	A M6x7,5 T15F	T15F	A06.L A06.R	
<b>▼ ØD = 7,0 mm</b>												
7,0	15,875	12,7	<b>A07.0.625.13 B ST</b>	A5VD	22,0	75,0	14,0	2,9	A M6x7,5 T15F	T15F	A07.L A07.R	<span style="background-color: #f00; color: white; font-size: 8px;">new inch</span>
7,0	16,0	12,7	<b>A07.0016.13 B ST</b>	AH14	22,0	75,0	14,0	2,9	A M6x7,5 T15F	T15F	A07.L A07.R	

Bestellbeispiel // Order example: **A06.0016.10 B ST**

simturn AX  
simturn DX  
simturn PX  
simturn H2  
simturn K2  
simturn C4  
simturn GX  
simturn E3  
simturn E12  
simturn FX  
simturn Decolletage  
simturn OA  
Index