

Klemmhalter, Außen

Klemmhalter für die Kleinteilebearbeitung.

Toolholder, External

Toolholder for small part machining.

Anzugsmoment (Schraube) // Tightening torque (screw)

"M M3,5x11 T10F": 3,0 Nm
"M M3,5x9 T10F": 3,0 Nm



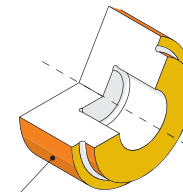
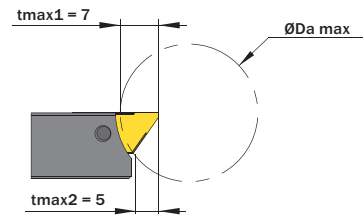
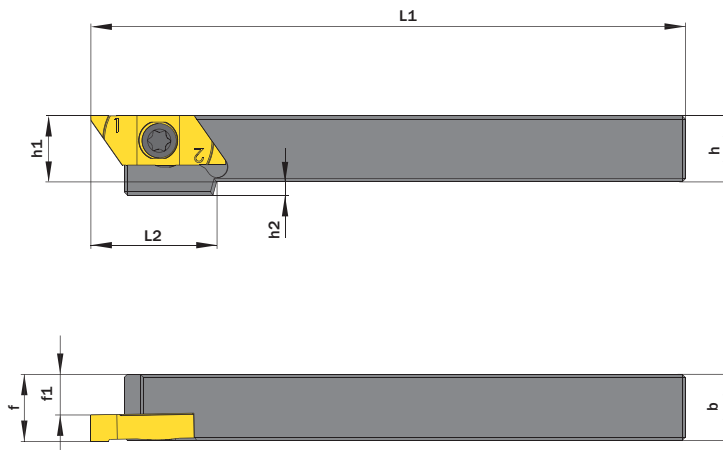
TW
ST **R**

Legende
Legend **272**



Scan
QR-Code

Oder besuchen Sie // Or Visit
www.simtek.info/cp/1108



- Hauptsächlich geeignet für diese Flächen
Mainly designed for these surfaces
- Je nach Schneidplatte/Aufnahme ebenfalls möglich
Also possible depending on insert/fixation type

Abbildung zeigt / Drawing shows: TK2.G.1010.A.14.04 R

h	b	L1	Artikelnummer Part number	Webcode www.simtek.com/webcode	f	f1	h1	h2	L2	ØDa max	Schraube Screw	Schraubenschlüssel Screw driver	Connectcode www.simtek.com/code
mm	mm	mm			mm	mm	mm	mm	mm	mm			
▼ h = 9,525 mm													
9,525	9,525	140,0	TK2.G.0.375.A.14.04 R	A22E	9,72	5,72	9,52	2,0	19,0	20,0	M M3,5x9 T10F	T10F	TK2.G.R.04
▼ h = 10,0 mm													
10,0	10,0	140,0	TK2.G.1010.A.14.04 R/L	R AYQ L AYGS	10,2	6,2	10,0	2,0	19,0	20,0	M M3,5x9 T10F	T10F	R TK2.G.R.04 L TK2.G.L.04
▼ h = 12,0 mm													
12,0	12,0	140,0	TK2.G.1212.A.14.04 R/L	R AYGK L AYG M	12,2	8,2	12,0	-	-	25,0	M M3,5x11 T10F	T10F	R TK2.G.R.04 L TK2.G.L.04
▼ h = 12,7 mm													
12,7	12,7	140,0	TK2.G.0.500.A.14.04 R/L	R A1DK L A1DH	12,9	8,9	12,7	-	-	32,0	M M3,5x11 T10F	T10F	R TK2.G.R.04 L TK2.G.L.04
▼ h = 15,875 mm													
15,875	15,875	140,0	TK2.G.0.625.A.14.04 R/L	R A1DN L A1DM	16,08	12,08	15,88	-	-	32,0	M M3,5x11 T10F	T10F	R TK2.G.R.04 L TK2.G.L.04
▼ h = 16,0 mm													
16,0	16,0	140,0	TK2.G.1616.A.14.04 R/L	R AYGF L AYG G	16,2	12,2	16,0	-	-	32,0	M M3,5x11 T10F	T10F	R TK2.G.R.04 L TK2.G.L.04

Bestellbeispiel // Order example: **TK2.G.1212.A.14.04 R** (R = Rechte Ausführung // Right hand version)

simturn AX
simturn DX
simturn PX
simturn H2
simturn K2
simturn C4
simturn GX
simturn E3
simturn E12
simturn FX
simturn Decolletage
simturn OA
Index